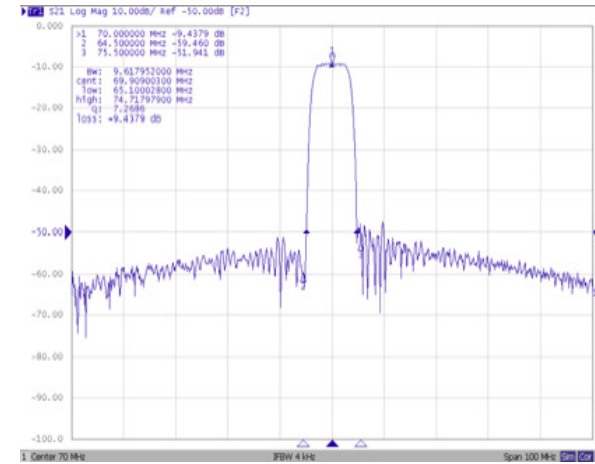
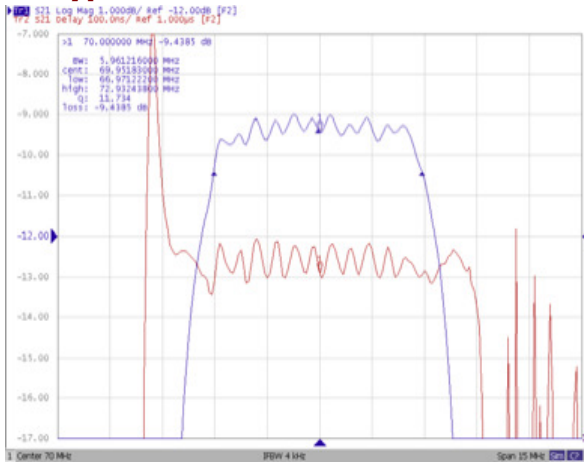


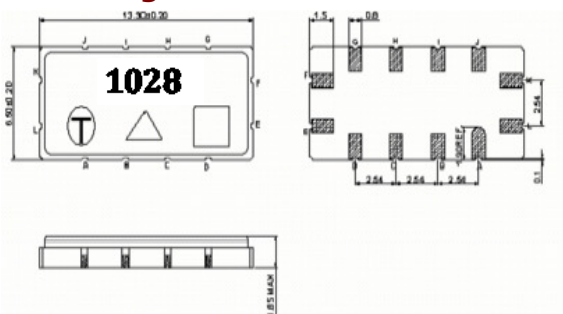
Typical Performance



Specification

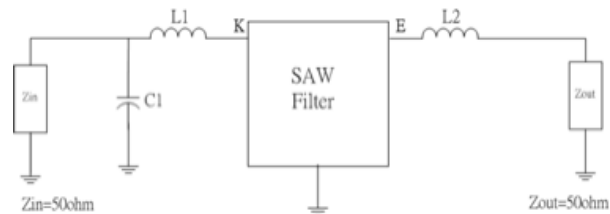
Index	Unit	Min	Typical	Max
Center Frequency	MHz	69.80	70.0	70.20
Insertion Loss	dB	-	9.4	11.0
1 dB Bandwidth	MHz	5.2	5.9	-
3 dB Bandwidth	MHz	6.0	6.8	-
40 dB Bandwidth	MHz	-	9.60	10.00
Passband Ripple (Fo+/-2.1 MHz)	dB	-	0.7	1.0
Group Delay Ripple	nsec	-	100.0	170.0
Ultimate Rejection	dB	35	38	-
Package	mm ²	13.3 x 6.5		
Substrate Material		YZ-LN		
Temperature Coefficient	ppm/°C	-94		
Input Power Level	dBm	-	-	20
DC Voltage	V	-	-	3
Operating Temperature	°C	-30	25	80
Storage Temperature	°C	-40	25	85

Package Dimension



K: RF Input L: RF Input Ground
 E: RF Output F: RF Balanced Output or to be ground
 A, B, C, D, G, H, I, J: Ground

Matching Configuration



L1 = 120 nH, L2 = 47 nH, C1 = 18 pF
 Source / Load Impedance = 50Ω
 Ambient Temperature = 25°C