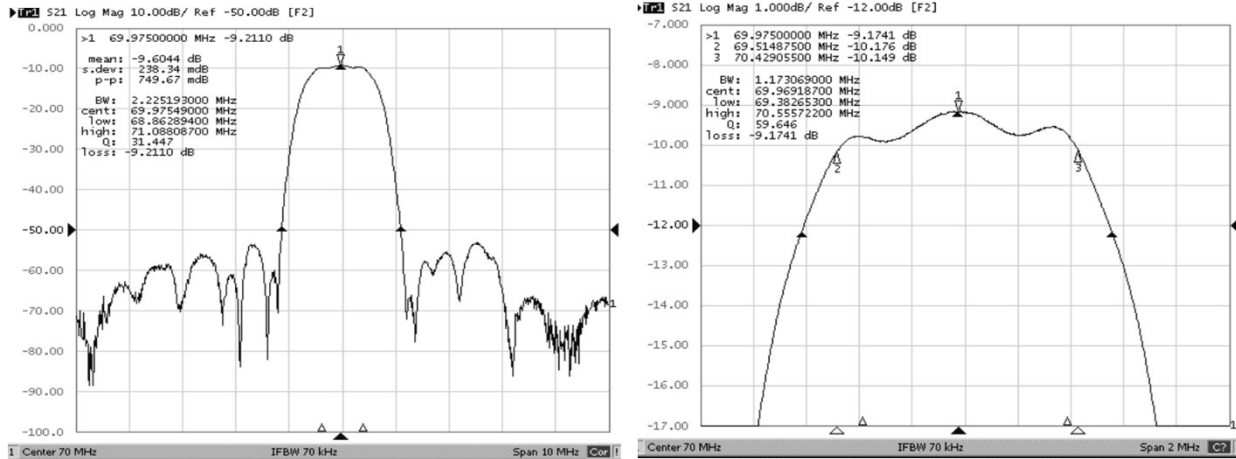


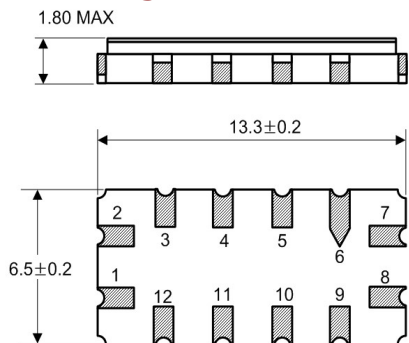
### Typical Performance



### Specification

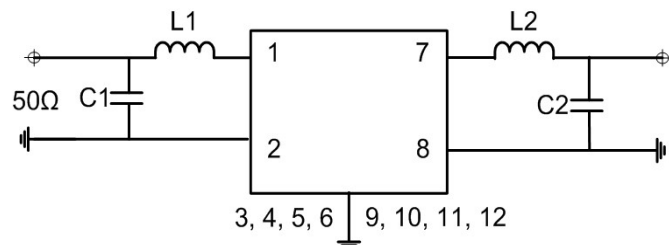
Index	Unit	Min	Typical	Max
Center Frequency	MHz	69.90	70.00	70.10
Insertion Loss	dB	-	9.2	11.5
-1 dB Bandwidth	MHz	0.80	0.92	-
-3 dB Bandwidth	MHz	1.10	1.20	-
-40 dB Bandwidth	MHz	-	2.20	2.30
Amplitude Ripple	dB	-	0.70	1.00
Group Delay Variation	nsec	-	350	400
Absolute Delay	µsec	-	-	-
Ultimate Rejection	dB	-	-	-
Package	mm <sup>2</sup>	13.3 x 6.5 x 1.8		
Substrate Material		-		
Temperature Coefficient	ppm/K	-		

### Package Dimension



1 : RF Input 2 : RF Input Ground  
 7 : RF Output 8 : RF Output Ground  
 3, 4, 5, 6, 9, 10, 11, 12 : Ground

### Matching Configuration



L1=330~480nH, L2=330~480nH, C1=82pF, C2=82pF  
 Source / Load Impedance = 50Ω  
 Ambient Temperature = 25°C