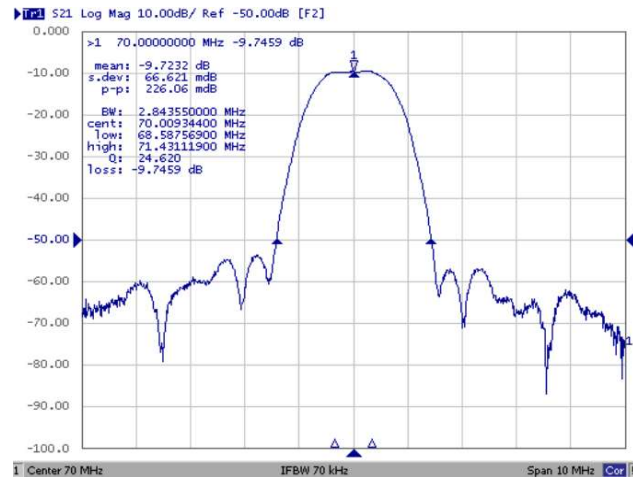
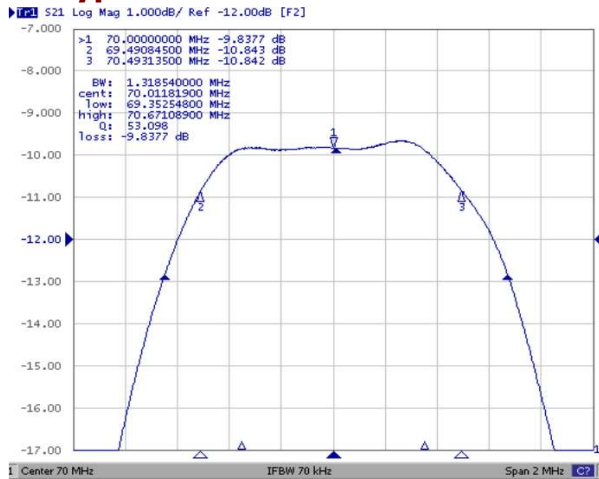


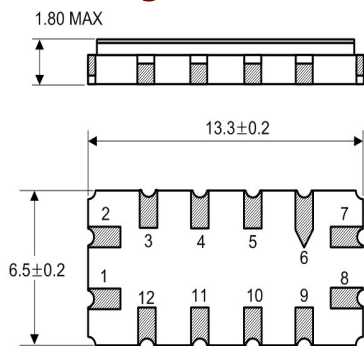
Typical Performance



Specification

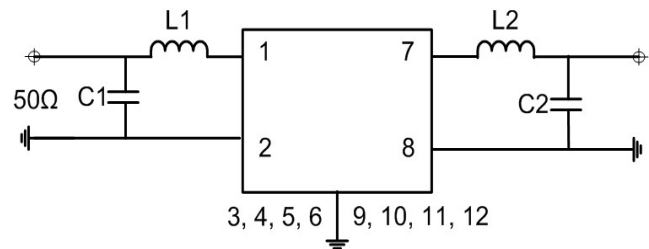
Index	Unit	Min	Typical	Max
Center Frequency	MHz	69.90	70.00	70.10
Insertion Loss	dB	-	9.8	12.0
-1 dB Bandwidth	MHz	-	1.00	-
-3 dB Bandwidth	MHz	1.26	1.32	-
-40 dB Bandwidth	MHz	-	2.84	-
Amplitude Ripple (Fc+/- 0.35MHz)	dB	-	0.30	1.00
Group Delay Variation (Fc+/- 0.35MHz)	nsec	-	160	280
Absolute Delay	µsec	-	-	-
Ultimate Rejection	dB	45	55	-
Package	mm ²	13.3 x 6.5 x 1.8		
Substrate Material		-		
Operating Temperature	°C	- 40	-	+ 80

Package Dimension



- 1 : RF Input 2 : RF Input Ground
- 7 : RF Output 8 : RF Output Ground
- 3, 4, 5, 6, 9, 10, 11, 12 : Ground

Matching Configuration



- L1=330~480nH, L2=330~480nH, C1=82pF, C2=82pF
- Source / Load Impedance = 50Ω
- Ambient Temperature = 25°C