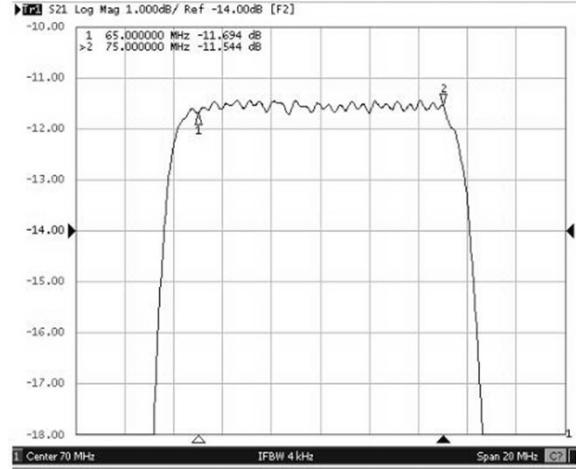
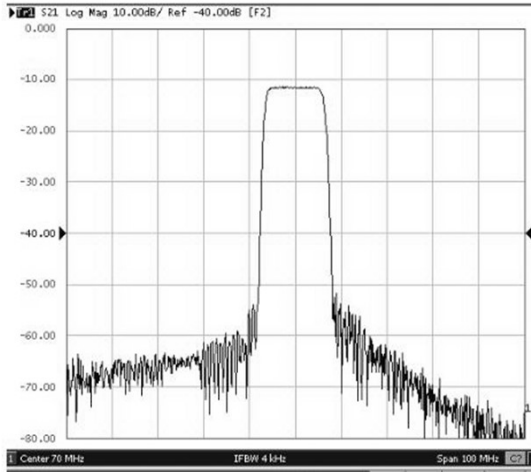


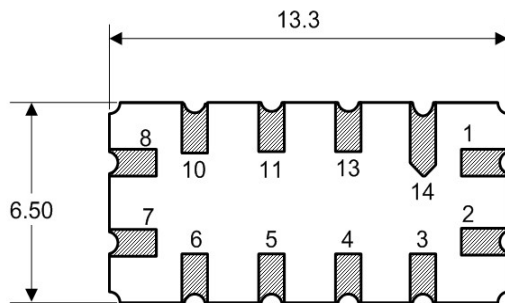
Typical Performance



Specification

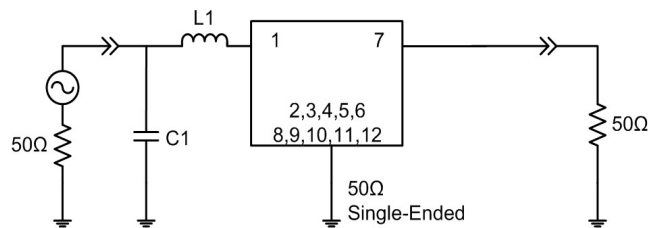
Index	Unit	Min	Typical	Max
Center Frequency	MHz	69.8	70.0	70.2
Insertion Loss	dB	-	11.5	13.0
1 dB Bandwidth	MHz	-	11.77	-
3 dB Bandwidth	MHz	-	12.77	-
40 dB Bandwidth	MHz	-	16.0	18.3
Passband Ripple	dB	-	0.46	1.00
Group Delay Ripple	nsec	-	30	90
Absolute Delay	μsec	-	-	-
Ultimate Rejection	dB	-	-	-
Package	mm ²	13.3 x 6.5 x 1.8		
Substrate Material				
Temperature Coefficient	ppm/°C	-94		

Package Dimension



- 1: RF Input
- 2: RF Input Ground
- 7: RF Output
- 8: RF Output Ground
- 3, 4, 5, 6, 9, 10, 11, 12: To be Ground

Matching Configuration



- L1=120nH, C1=68nH
- Source / Load Impedance = 50Ω
- Ambient Temperature = 25°C