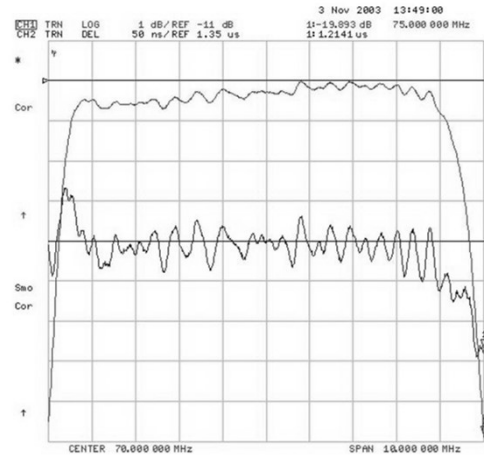
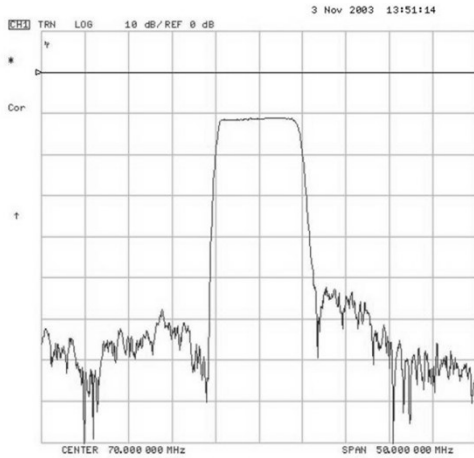


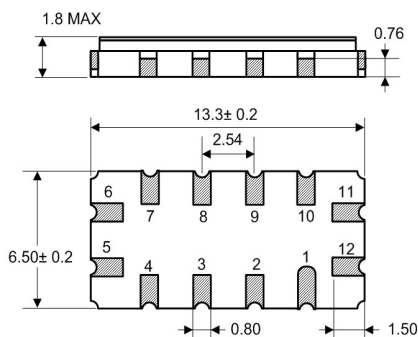
Typical Performance



Specification

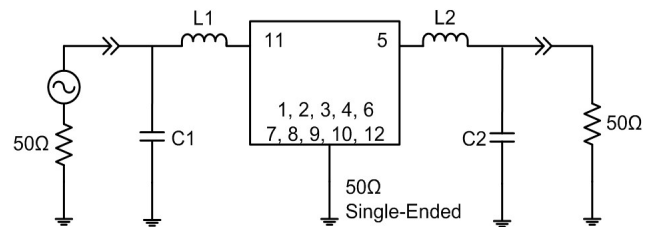
Index	Unit	Min	Typical	Max
Center Frequency	MHz	69.8	70.0	70.2
Insertion Loss	dB	-	10.7	11.5
1 dB Bandwidth	MHz	8.4	8.66	-
3 dB Bandwidth	MHz	9.0	9.31	-
35 dB Bandwidth	MHz	-	11.7	13.0
Amplitude Ripple	dB	-	0.6	1.0
Group Delay Variation	nsec	-	125	160
Absolute Delay	µsec	-	-	-
Ultimate Rejection	dB	-	-	-
Package	mm ²	13.3x6.5x1.8		
Substrate Material		YZ-LN		
Temperature Coefficient	ppm/°C	-94		

Package Dimension



11: RF Input 5: RF Output
 12: Input Ground 6: Output Ground
 1, 2, 3, 4, 7, 8, 9, 10: To be Ground

Matching Configuration



L1=220nH, L2=220nH, C1=36pF, C2=68pF
 Source / Load Impedance = 50Ω
 Ambient Temperature = 25°C