

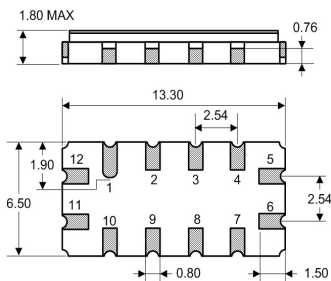
### Typical Performance



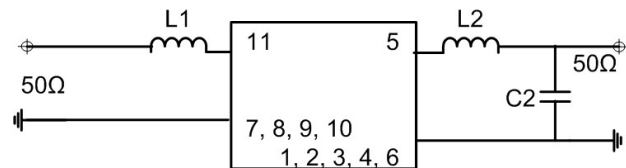
### Specification

Index	Unit	Min	Typical	Max
Center Frequency	MHz	-	70.0	-
1dB bandwidth	MHz	4.4	5.10	-
3dB bandwidth	MHz	-	5.97	-
35 dB bandwidth	MHz	-	8.55	9.0
Insertion Loss	dB	-	9.0	11.0
Passband ripple (Fc +/- 1.7MHz)	dB	-	0.3	1.0
Group Delay ripple (Fc +/- 1.7MHz)	nS	-	40	100
Absolute Delay	uS	-	0.88	-
Attenuation : (Reference level from 0 dB)				
0 ~ 64.25 MHz	dB	40	45	-
74.5 ~ 81.2 MHz	dB	37	42	-
81.2 ~ 84 MHz	dB	40	45	-
Operating Temperature	°C	-40	-	+85
Temperature Coefficient	ppm/°C	-	-86	-
Package	mm	13.3 x 6.5 x 1.8		

### Package Dimension



### Matching Configuration



11: RF Input  
5: RF Output  
12: Input Ground 6: Output Ground  
1, 2, 3, 4, 7, 8, 9, 10: To be Ground

L1 = 200nH, L2 = 120nH, C2 = 10pF  
Source / Load Impedance = 50Ω  
Ambient Temperature = 25°C

Email: [sales@sawtron.com](mailto:sales@sawtron.com) | Tel: 1-858-674-6434 | Fax 1-619-374-7262

**RoHS**