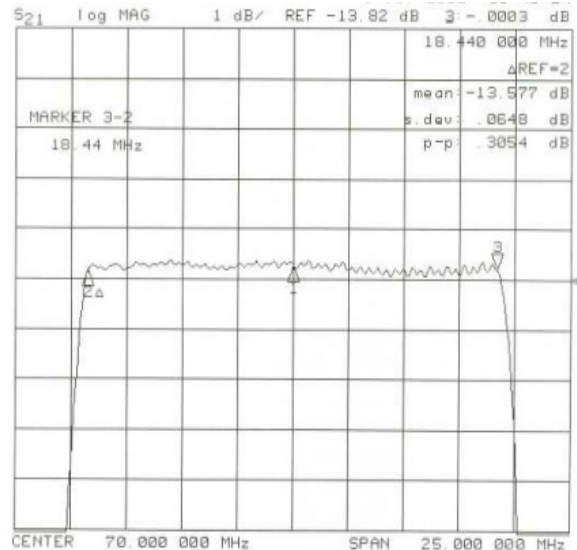
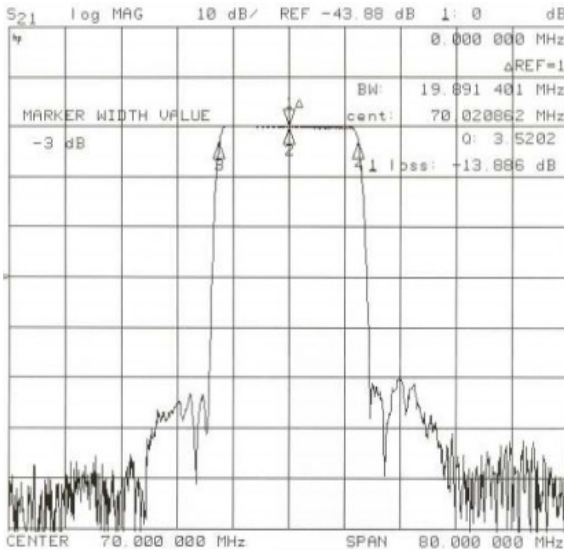


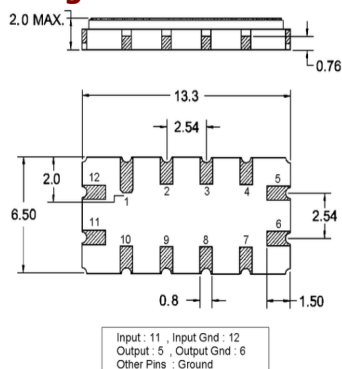
Typical Performance



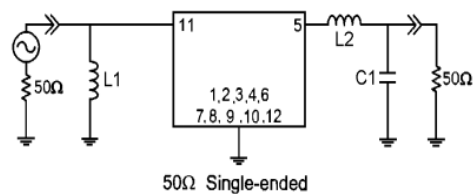
Specification

| Index | Unit | Min | Typical | Max |
|-----------------------|-----------------|-----------------------|---------|-------|
| Center Frequency | MHz | 69.85 | 70 | 70.15 |
| Insertion Loss | dB | - | 13.8 | 14.50 |
| 1 dB Bandwidth | MHz | 19 | 19.2 | - |
| 3 dB Bandwidth | MHz | - | 19.9 | - |
| 40 dB Bandwidth | MHz | - | 22.68 | 23 |
| Passband Ripple | p-p dB | - | 0.5 | 1.0 |
| Group Delay Variation | nsec | - | 47 | 100 |
| Ultimate Attenuation | dB | 40 | 45 | - |
| Absolute Delay | usec | - | 1.27 | - |
| Substrate Material | - | YZ-LiNbO ₃ | | |
| Package | mm ² | 13.3 x 6.5 (SMD) | | |

Package Dimension



Matching Configuration



L1 = 82 nH, L2 = 120 nH, C1 = 62 pF
 Source / Load Impedance = 50 Ω
 Ambient Temperature = 25°C

70 MHz Bandpass Filter 20.00 MHz Bandwidth

