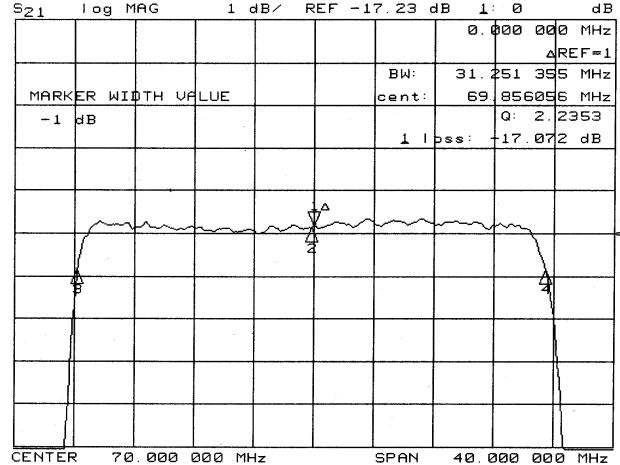
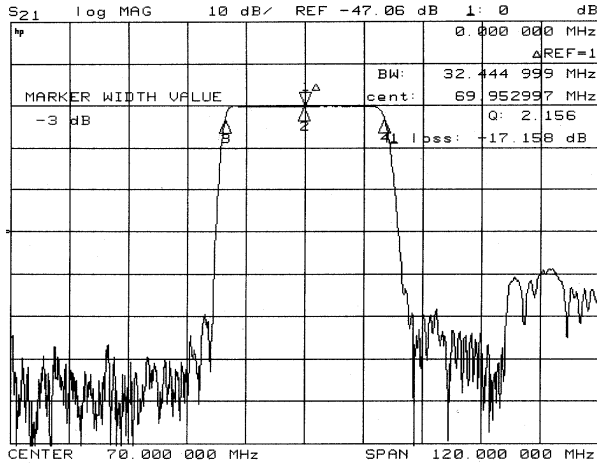


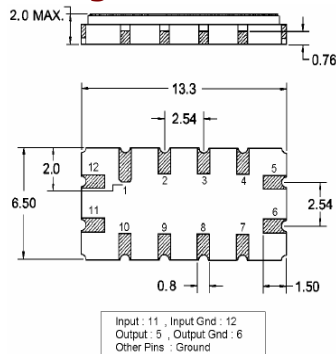
Typical Performance



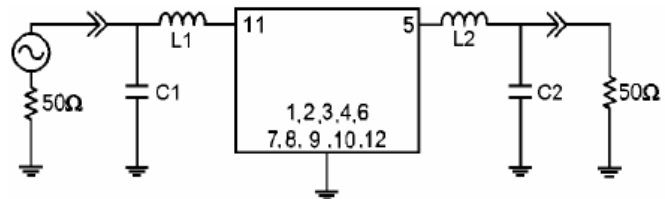
Specification

| Index | Unit | Min | Typical | Max |
|-------------------------|-----------------|-------------------------|---------|-------|
| Center Frequency | MHz | 69.85 | 70 | 70.15 |
| Insertion Loss | dB | - | 17.5 | 19 |
| 1 dB Bandwidth | dB | - | 31.25 | - |
| 3 dB Bandwidth | dB | 32 | 32.44 | - |
| 40 dB Bandwidth | dB | - | 38.24 | 39 |
| Passband Ripple | dB | - | 0.55 | 1 |
| Group Delay Variation | nsec | - | 50 | 100 |
| Absolute Delay | usec | - | 0.84 | - |
| Ultimate Attenuation | dB | - | 40 | - |
| Temperature Coefficient | ppm/°C | - | -86 | - |
| Substrate Material | | YZ - LiNbO ₃ | | |
| Package | mm ³ | 13.3 x 6.5 x 2.0 | | |

Package Dimension



Matching Configuration



L1 = L2 = 180 nH, C1 = 24 pF, C2 = 12 pF
 Source / Load Impedance = 50Ω
 Ambient Temperature = 25°C