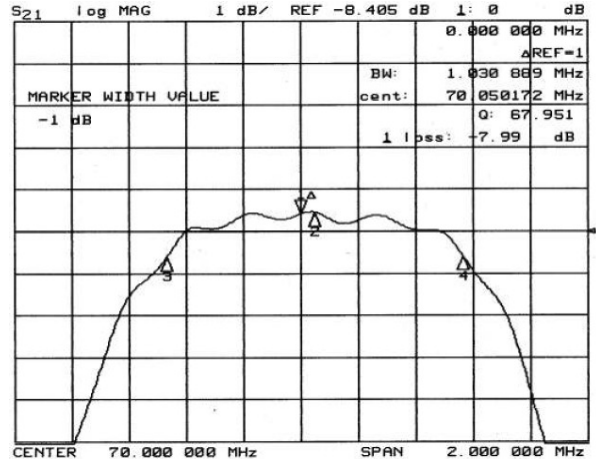
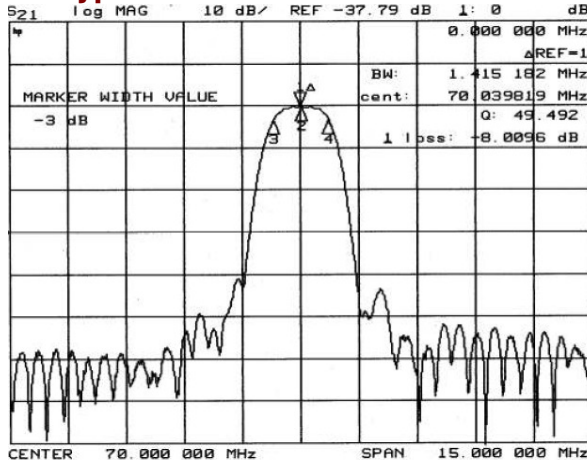


## 70 MHz Bandpass Filter 1.3 MHz Bandwidth

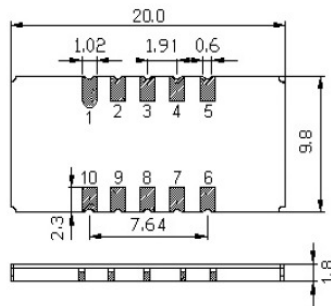
### Typical Performance



### Specification

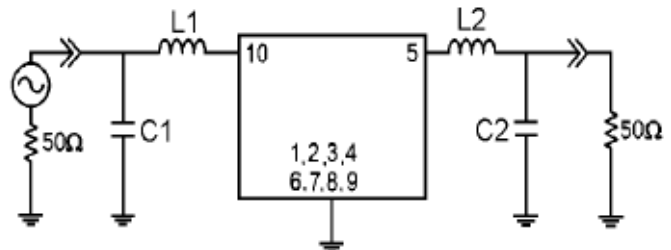
Index	Unit	Min	Typical	Max
Center Frequency	MHz	69.92	70.00	70.08
Insertion Loss	dB	-	8.0	9.50
1 dB Bandwidth	MHz	0.90	1.03	-
3 dB Bandwidth	MHz	1.30	1.40	-
40 dB Bandwidth	MHz	-	2.86	3.00
Passband Ripple	dB	-	0.65	1.00
Group Delay Variation	nsec	-	200	300
Absolute Delay	μsec	-	2.20	-
Ultimate Attenuation	dB	40	45	-
Package	mm <sup>2</sup>	20 x 9.8		
Substrate Material		LiTaO <sub>3</sub>		
Temperature Coefficient	ppm/°C	-20		

### Package Dimension



10: Input, 1: Input Ground  
5: Output, 4: Output Ground  
2,3,6,7,8,9: Case Ground

### Matching Configuration



50Ω Single-ended  
L1, L2, C1, C2 = TBD  
Source / Load Impedance = 50Ω  
Ambient Temperature = 25°C